

General safety information

| Hazard | Probable Consequences of Hazard | Information about how to avoid |
|---------------------------------|---|---|
| Burns | Injury to skin. | Many cautions, including: <ul style="list-style-type: none"> • Disconnect the battery from the product if user feels an overwhelming sense of heat • Do not use on highest setting. • Be aware of sensitivity. • Know early warning sensations. • Be aware if possessing certain physiological conditions. • Check feet regularly • Visually inspect each component prior to use; if any component looks worn, broken, or cracked, please refrain from use and contact Hotronic for inspection. |
| Non-Hotronic Parts, Accessories | Malfunction | Use ONLY original Hotronic components and parts for your Footwarmer. |
| Liquid in Battery Pack | Overheating/Burns | Keep Battery Pack clean and dry. Clean with dry cloth. Don't use if wet. If LED lights won't switch off, water may be present. |
| Battery Pack Malfunction | Exposure to chemicals, explosion, fire, personal injury, etc. | Keep Battery Pack clean and dry. Clean with dry cloth. Be careful with the battery pack. Don't use a different battery pack. Don't use a damaged battery pack. Don't open the Battery Pack. |
| Children/Animal | Not capable of identifying warning signs of a burn. | Do not use. |
| Damaged charging cable | Fire, danger. | Only use supplied charging cable. Do not use product if there is damage to charging cable. Do not attempt self-repair. Do not open. |
| Improper use | Burns, fire, danger. | Do not use for any other purpose other than warming feet. |
| Storage | Damaged product, danger. | Store at room temperature out of direct sunlight. |
| Charging | Malfunctions, danger. | Battery Packs must not be recharged if the battery temperature is below 10°C/50°F. |

CAUTIONS REGARDING BURNS

Use of Hotronic Foot Warmer may result in burns. The higher the temperature setting, the higher the risk of burns.

- IT IS USER'S RESPONSIBILITY TO:
 - Properly use Hotronic Foot Warmer according to Instructions.
 - Understand his or her own individual sensitivity to heat and susceptibility to burns.
 - Understand his or her own individual early warning sensations of a burn.
 - Remove his or her feet from source of heat before a burn may occur.
- SOME EARLY WARNING SENSATIONS OF A BURN are:
 - When any area of your feet becomes hot.
 - When any area of your feet feels like you are standing on a small pebble or pointed object and may or may not feel hot.
 - The colder one's feet are, the sharper the sensation may feel.
 - Early warning sensations of a burn may differ from person to person.
- IMMEDIATELY UNPLUG Heating Element from Battery Pack and IMMEDIATELY REMOVE your foot from Foot Warmer if you feel your foot getting hot, if you think you might be getting a burn, or if you experience any early warning sensations of a burn. Do not reuse Foot Warmer until you are certain your foot is no longer at risk of being burned. SEE A PHYSICIAN IMMEDIATELY if you think you have a burn.
- DO NOT USE heat setting 4 for more than three minutes at a time. It may become too hot for continuous use and may result in burns.
- CONSULT WITH YOUR PHYSICIAN prior to using Foot Warmer if you might have any physiological condition or are using any medication or drug which increases skin sensitivity or reduces skin sensation to heat. Such physiological condition or medication increases risk of burns. Some physiological conditions or medications which increase skin sensitivity or reduce skin sensation to heat are calluses on feet, diabetes, cardiovascular problems, nervous system disorders, Raynaud's syndrome, and tetracycline. Other physiological conditions

CAUTIONS REGARDING BURNS

- or medications which increase skin sensitivity or reduce skin sensation to heat may exist.
- DO NOT WAIT until your feet are cold to turn temperature setting up because cold feet reduce skin's sensation to heat and increase risk of burns.
- DO NOT USE damp or wet socks because presence of moisture increases heat transfer and may increase risk of burns.
- DO NOT USE Hotronic Heating Element (1) without fabric covering Heating Element or (2) with Heating Element directly exposed on surface of insole.
- NOT RECOMMENDED FOR USE by infants, toddlers, children, or individuals incapable of knowing, understanding, or acting upon early warning sensations of a burn.
- DO NOT USE while consuming drugs or alcohol because these may increase skin sensitivity, reduce skin sensation to heat, or reduce one's ability to detect early warning sensations of a burn. Such drugs or alcohol may increase risk of burns.
- DO NOT USE while sleeping.
- WATER AROUND ELECTRICAL CONTACTS may cause Heating Element to become hot at any setting and MAY RESULT IN BURNS.
- WHEN BATTERY PACK LED stays ON and CANNOT BE TURNED OFF, water may be around electrical contacts, may cause Heating Element to become hot at any setting, and MAY RESULT IN BURNS. If you feel your foot getting hot, think you might be getting a burn, or experience any early warning sensations of a burn, IMMEDIATELY UNPLUG Heating Element from Battery Pack and IMMEDIATELY REMOVE your foot from Foot Warmer. Dry out Battery Pack, plug area, and Heating Element plug. Do not use again until Battery Pack LED CAN BE TURNED OFF. Consider Battery Pack LED a water presence indicator. MAINTAIN CAUTION REGARDING BURNS at all times.

WELCOME TO HOTRONIC FOR 23/24!

CONTENTS IN BOX

Foot Warmer CUSTOM Power Plus S4+ contains:

- 2 Battery Packs with Integrated Heat Regulator
- 1 Pair of Heating Elements with Self-Adhesive Fabric Covers and Strips
- 1 Recharger (global input 100-240VAC, 50/60Hz)
- Operating Instructions & Limited Warranty Card

Foot Warmer UNIVERSAL Power Plus S4+ contains:

- 2 Battery Packs with Integrated Heat Regulator
- 1 Pair of Heating Elements with Self-Adhesive Fabric Covers and Strips
- 1 Recharger (global input 100-240VAC, 50/60Hz)
- 1 Pair of trim to size OSFAI (One Size Fits All Insoles)
- Operating Instructions & Limited Warranty Card

Foot Warmer POWER SET Power Plus S4+ contains:

- 2 Battery Packs with Integrated Heat Regulator
- 1 Recharger (global input 100-240VAC, 50/60Hz) with North American and European Plug Adapters
- Operating Instructions & Limited Warranty Card

OVERVIEW

The Hotronic Foot Warmer is dedicated to your foot wherever it goes and easily transfers from one type of footwear to another. Based on computer technology, Battery Pack's micro-controller permits four (4) temperature-duration settings. High quality, rechargeable NiMH batteries are selected for cold temperature performance. Heating Elements located directly under toes. Recharger globally accepts input ranging from 100-240VAC, 50/60Hz. Following temperatures and durations are approximations only, as ratings are affected by recharging process and various tolerances of batteries and electronics. Durations are determined when Battery Packs are used in ambient temperature of -4°F (-20°C).

| DURATION CHART | | | | |
|---|-----------|-----------|-----------|-----------|
| | Setting 1 | Setting 2 | Setting 3 | Setting 4 |
| S4+ | 16.5 – 21 | 7 – 10.5 | 5 – 7.5 | 2.5 – 4.5 |
| Based on Battery Pack in ambient temperatures of -22° to -15° C (-9° to +4° F) Based on Heating Element in ambient temperatures of 20° to 26° C (68° to 79° F) | | | | |

OPERATING BATTERY PACK SETTINGS

1. To turn on or off, press-and-hold ON or OFF until LED light is ON or OFF (~2.0 seconds).
2. To change setting, press-and-hold ◀ or ▶ until setting LED light changes (~0.5 seconds).
3. Once selected, setting 4 auto-resets to setting 3 after 3 minutes ("timed setting 4").
4. DO NOT USE "TIMED SETTING 4" for more than three minutes at a time as it may become too hot and may result in burns. SEE CAUTIONS REGARDING BURNS.

BATTERY PACK LED LIGHTS (LEDs)

1. Battery Pack LEDs indicate power is on or off and setting selected. LEDs do not indicate charge level.
2. LEDs will not light when batteries are fully discharged, are below minimum voltage cutoff level, or do not have enough power to heat Element.

EXCESS HEAT ON ANY SETTING, INCLUDING OFF

1. WHEN BATTERY PACK LED stays ON and CANNOT BE TURNED OFF, water may be around electrical contacts, may cause Heating Element to become hot at any setting, and MAY RESULT IN BURNS. See CAUTIONS REGARDING BURNS.
2. WHEN BATTERY PACK IS ON ANY SETTING, INCLUDING OFF, and you feel your foot getting hot, you think you might be getting a burn, or you experience any early warning sensations of a burn, IMMEDIATELY UNPLUG Heating Element from Battery Pack and IMMEDIATELY REMOVE your foot from Foot Warmer. See CAUTIONS REGARDING BURNS.

USING HEAT SETTINGS

1. Use Foot Warmer to maintain comfort and warmth. (Note: Prevent feet from getting cold. Warming cold feet requires more energy, is less effective, and is not intended use of Foot Warmer.)
2. Before going into cold, set at 1, 2, or 3 to maintain comfort and warmth.
3. For additional burst of heat, set to "timed setting 4". "Timed setting 4" auto-resets to setting 3 after 3 minutes.
4. DO NOT USE "TIMED SETTING 4" for more than three minutes at a time as it may become too hot and may result in burns. SEE CAUTIONS REGARDING BURNS.
5. Heat does not thermostatically cycle on and off. Settings 1 and 2 maintain warmth AND save energy.

WHAT TO EXPECT OF HEAT SETTINGS

1. Expect imperceptible heat to maintain comfort and warmth.
2. Do not expect "fireplace toes".
3. Learn what personally works best over time.
4. Think of your Foot Warmer as Thermo Active Insulation (TM). As cold penetrates through insole, it draws heat off Element rather than toes. Balanced heat is imperceptible yet maintains comfort and warmth. Too much heat and feet feel excess heat. Too little heat and feet feel cold penetrating through.
5. If feet are comfortable yet feel excess heat, turn to lower setting to minimize perspiration and maximize battery duration.
6. If feet begin to feel cool, turn setting up to maintain comfort and warmth.
7. If you think Foot Warmer is not working, try turning left Battery Pack off. If left foot becomes colder, Foot Warmer is working.
8. Ability to feel heat and maintain comfort and warmth depends upon: proper installation; type, fit, and dryness of footwear, sock, and insole; foot callus size; activity levels; weather conditions; and other factors.
9. Expect bottom of toes to feel heat less than fingers and hands.

COMFORT AND WARMTH RANGES

When first learning use of Foot Warmer, following chart may help in setting selection. Chart represents approximate ranges for comfort and warmth maintenance. First determine outside temperature then select setting based

| COMFORT AND WARMTH RANGES | | | | | | | | | | |
|---------------------------|---|-----|----|----|----|-----|-----|-----|-----|-----|
| OUTSIDE TEMPERATURES | | | | | | | | | | |
| ° | C | >0 | 0 | -4 | -7 | -10 | -12 | -15 | -18 | -21 |
| Setting | F | >32 | 32 | 25 | 20 | 15 | 10 | 5 | 0 | -5 |
| 1 | | • | • | • | • | • | | | | |
| 2 | | | • | • | • | • | • | • | | |
| 3 | | | | | • | • | • | • | • | • |

on personal sensitivity to cold. More sensitive select left of range. Less sensitive select right.

TIPS ON USING FOOT WARMER

1. Extremely poor circulation or extremely cold conditions may require setting 2 or 3 for comfort and warmth. Extra Battery Packs extend all day comfort and warmth.
2. Do not allow chair lift to hit you! Damage may result to you and your Foot Warmer.
3. Be careful walking down stairs! Battery Packs may catch stair edge when mounted on back of boots.
4. Place heated insole (fabric surface up) directly underneath socked foot. Do not place another insole over heated insole.

WELCOME TO HOTRONIC FOR 23/24!**DRY BOOTS! DRY SOCKS!**

1. If boots and socks are wet, expect cold feet.
2. Wet conductive heat loss is 23 times greater than dry heat loss. (W. L. Gore & Associates, 1994)
3. Feet perspire more than any other part of your body except your head and hands. Each foot perspires about 1/4 cup of water a day at rest and one full cup when active. (W. L. Gore & Associates, 1994)
4. Maintain dry boots! Dry after each use! Each additional day of moisture buildup makes warm feet more difficult. Consider boot dryer (i.e. Hotronic's MicroDry or TechDry Dryers).
5. Remove inner boots to dry between liner and boot shell.
6. Maintain dry, clean socks! Change midday for afternoon comfort and warmth.
7. Use single pair of medium weight socks. Select wool blend, polypropylene[®], or thermax[®] type socks to wick moisture away and keep feet dry and warm.
8. Do not use thick socks, neoprene socks, or reflective sock liners as these keep heat from toes.
9. Do not use cotton or other moisture absorbing socks.

RECHARGING BATTERY PACKS

- **CAUTION - WARRANTY:** Use Hotronic's White Plug Recharger ONLY for Power Plus S/e/m Series Battery Packs (S4+, S3, e4, e3, m4, m3). Using other than Hotronic's White Plug Recharger voids Warranty.
- **CONDITIONING CHARGE:** When Battery Pack is new or has not been used for 2 months or more, it is recommended to charge Battery Pack for 24 to 72 hours uninterrupted. Conditioning Charge brings new, unused, or unconditioned Battery Pack to full duration and temperature potential.
- **RECOMMENDED OVERNIGHT RECHARGING PROMPTLY AFTER EACH USE:** Hotronic's Recommended Process of Overnight Recharging Promptly After Each Use helps maintain properly conditioned Battery Pack throughout season and during long periods of non-use. To further optimize charge levels after a week or more of non-use, repeat Overnight Recharging Process the night before next use.
- **FULLY CHARGED IN APPROXIMATELY 3 HOURS OR LESS:** Hotronic's White Plug Recharger detects when one or more batteries within Battery Pack are fully charged and automatically switches to trickle current recharging (Recharger LED is green) after approximately 3 hours or less of full current recharging. Fully charged, properly conditioned Battery Pack reaches full duration and temperature potential. Fully charged, unconditioned Battery Pack does NOT reach full duration and temperature potential. (See Conditioning Charge.)
- **SUMMER AND LONG TERM STORAGE:** Recharge Battery Pack as per instructions for Recommended Overnight Recharging Process, turn Battery Pack off, and store without Recharger or Heating Element plugged in. **RECOMMENDED BEST STORAGE TEMPERATURES** range from 5°-25°C (40°-80°F).
- **ELECTRIC INPUT:** Recharger accepts electric input ranging from 100-240VAC, 50-60Hz.
- **OCCASIONAL FULL DISCHARGE:** While not required of NiMH batteries, Hotronic recommends an occasional full discharge before fully recharging to help maintain optimal strength. Plug Heating Element into Battery Pack and use "continuous setting 4" for quickest discharge. Battery Pack is fully discharged when Heating Element is no longer warm and all LEDs are off.

RECHARGE WHEN BATTERY PACK IS OFF: Hotronic recommends recharging when Battery Pack is off. (Battery Pack is off when all LEDs are off.) However, Battery Pack MAY be recharged at any setting. If recharging while on setting 1, 2, 3, or 4, **DO NOT CHANGE SETTING DURING RECHARGING** as this may cause recharging process to stop.

1. Plug Recharger into wall outlet using correct plug adapter (North American, European, or other).
 - a. Recharger performs short self-test with brief red LED followed by brief green LED and then LED off.
2. Attach each Battery Pack to Recharger.

3. Recharger LED is continuous red when detecting Battery Pack status and during initial current and full current recharging.
 - a. If Battery Pack status is not okay or is not compatible, Recharger will blink red within 20 minutes of continuous red.
 - b. Maximum duration for continuous red is approximately 3 hours at which time Recharger LED becomes green.
4. Recharger LED is green once one or more batteries within Battery Pack are fully charged and indicates trickle current recharging. (See Conditioning Charge.)
 - a. One Battery Pack may reach full charge before other.
5. Battery Pack may be removed at any time during recharging process and may be re-attached to Recharger at any time.
6. Once Recharging Process is complete:
 - a. Unplug Battery Pack from Recharger.
 - b. Unplug Recharger from wall outlet.
7. To maintain maximum charge after recharging, turn Battery Pack off and store without Recharger or Heating Element plugged in.

WHAT TO EXPECT OF BATTERY PACKS

1. Expect all battery types to lose strength over time.
2. Expect optimal performance of newer Battery Packs.
3. Expect optimal performance with use shortly after recharging.
4. Expect less than optimal performance after recharging as each week or month passes before use.
5. Expect shorter durations and lower temperatures of unconditioned Battery Packs. Unconditioned Battery Packs are the result of being new or unused for 2 months or more. (See Conditioning Charge.)
6. Unconditioned Battery Packs can be used without harm to batteries.
7. Battery self-discharge rates may range from 2 to 5 percent per month when stored at ambient temperature of ~20°C (~68°F).
8. When Battery Packs are unplugged and left on settings 1, 2, 3, or 4, a significant increase in discharge results.
9. When unplugging Recharger from wall outlet, also unplug Battery Packs from Recharger. When not unplugged, damage may occur to Recharger and a significant increase in Battery Pack discharge may occur regardless of setting.

TIPS ON RECHARGING

1. When Recharger green LED is on (trickle current recharging), Battery Pack may remain on Recharger indefinitely.
2. However, as further protection against possible battery damage from power outage, surge, or brownout, Hotronic DOES NOT recommend leaving Battery Pack on Recharger for extended periods of time such as 24 hours or more (except during Conditioning Charge).
3. To confirm wall outlet is NOT controlled by switch, plug in Recharger, attach Battery Pack, and confirm continuous red LED status. Recharger's red LED is on continuously when outlet current is active and goes off within seconds when outlet is turned off by switch.
4. One or two Battery Packs may be recharged on one Recharger per above instructions.
5. Any combination of Power Plus S/e/m Series Battery Packs (S4+, S3, e4, e3, m4, m3) may be recharged simultaneously on same Recharger.
6. Hotel room razor outlets (and other Ground Fault Current Interrupter outlets) are not recommended.

TIPS ON SUMMER & LONG TERM STORAGE

1. For summer and long term storage, recharge Battery Pack as per Recommended Overnight Recharging Process instructions, turn Battery Pack off, and store without Recharger or Heating Element plugged in.
2. Prior to use after summer and long term storage, perform Battery Pack Conditioning Charge for 24 to 72 hours uninterrupted.
3. Do not store (or keep overnight) Battery Pack at temperatures above 105°F (40°C) as this will harm batteries.
4. Do not store (or keep overnight) Battery Pack at temperatures at or below freezing (32°F) (0°C) as it may harm batteries.
5. Do not store (or keep overnight) Recharger at temperatures below -4°F (-20°C) or above 149°F (65°C) as this may harm Recharger.

WELCOME TO HOTRONIC FOR 23/24!

CONTENTS IN BOX

Foot Warmer CUSTOM XLP 2C BT contains:

- 2 Battery Packs with Bluetooth Connectivity
- 1 Pair of Heating Elements with Self-Adhesive Fabric Covers and Strips
- 1 USB A to XLP C Recharging Cable
- Operating Instructions & Limited Warranty Card

Foot Warmer ANATOMIC XLP 2C BT contains:

- 2 Battery Packs with Bluetooth Connectivity
- 1 USB A to XLP C Recharging Cable
- 1 Pair of trim to size Anatomic insoles with integrated Heating Elements
- Operating Instructions & Limited Warranty Card

Foot Warmer CUSTOM XLP 1C contains:

- 2 Battery Packs with Integrated Heat Regulator
- 1 Pair of Heating Elements with Self-Adhesive Fabric Covers and Strips
- 1 USB A to XLP C Recharging Cable
- Operating Instructions & Limited Warranty Card

OVERVIEW

The Hotronic Foot Warmer is dedicated to your foot wherever it goes and easily transfers from one type of footwear to another. Based on computer technology, Battery Pack's micro-controller permits four (4) temperature-duration settings. High quality, rechargeable Li-Ion batteries are selected for cold temperature performance. Heating Elements located directly under toes. Following temperatures and durations are approximations only, as ratings are affected by recharging process and various tolerances of batteries and electronics. Durations are determined when Battery Packs are used in ambient temperature of -4°F (-20°C).

DURATION CHART

| Set. | Duration Range (Hours) | | | | |
|------|------------------------|-----------|-----------|----------|-----------|
| | XLP 1P | XLP 2P | XLP 1C | XLP 2C | S4+ |
| 1 | 8 – 10 | 16 – 18 | 10 – 12 | 20 - 24 | 16.5 - 21 |
| 2 | 4 – 6 | 9 – 12 | 5 – 7 | 10 – 14 | 7 - 10.5 |
| 3 | 3 – 4.5 | 6.5 – 9.5 | 3.5 – 5.5 | 7 – 10.5 | 5 - 7.5 |
| 4 | 2.5 – 3.5 | 5 - 6 | 2.5 – 3.5 | 5 – 6.5 | 2.5 - 4.5 |

Based on Battery Pack in ambient temperatures of -22° to -15° C (-9° to +4° F)
Based on Heating Element in ambient temperatures of 20° to 26° C (68° to 79° F)

OPERATING BATTERY PACK SETTINGS

1. To turn on or off, press-and-hold Power Button until LED light is ON or OFF (~2.0 seconds).
2. To change setting, press-and-hold Power Button until setting LED light changes (~0.5 seconds).
3. Once selected, setting 4 auto-resets to setting 3 after 3 minutes ("timed setting 4"). ("Timed setting 4" LED lights are ON continuously and do NOT blink.)
4. DO NOT USE "TIMED SETTING 4" or "CONTINUOUS SETTING 4" for more than three minutes at a time as it may become too hot and may result in burns. SEE CAUTIONS REGARDING BURNS.

BATTERY PACK LED LIGHTS (LEDs)

1. Battery Pack LEDs indicate power is on or off and setting selected. LEDs do not indicate charge level, unless connected to the Recharger.
2. LEDs will not light when batteries are fully discharged, are below minimum voltage cutoff level, or do not have enough power to heat Element.

EXCESS HEAT ON ANY SETTING, INCLUDING OFF

1. WHEN BATTERY PACK LED stays ON and CANNOT BE TURNED OFF, water may be around electrical contacts, may cause Heating Element to become hot at any setting, and MAY RESULT IN BURNS. See CAUTIONS REGARDING BURNS.
2. WHEN BATTERY PACK IS ON ANY SETTING, INCLUDING OFF, and you feel your foot getting hot, you think you might be getting a burn, or you

experience any early warning sensations of a burn, IMMEDIATELY UNPLUG Heating Element from Battery Pack and IMMEDIATELY REMOVE your foot from Foot Warmer. See CAUTIONS REGARDING BURNS.

PAIRING XLP P & C BATTERY PACKS WITH BLUETOOTH

- The settings for the Lithium-Ion Battery Pack XLP@C/@P/1P BT can be configured using the Hotronic Heat App on your smartphone. You can download the Hotronic Heat App for free from the Android Play Store or Apple Store.
 - The Battery Packs need to be in Pairing Mode before you can connect them properly to your device.
 - Pairing Mode can be initiated at any Heat Setting.
 - You will not be able to activate this mode when the Battery Pack is switched off or connected to the Recharger.
1. Switch on the Bluetooth-enabled Battery Packs using the power button.
 2. Press and hold the power button until the Battery Pack increases to setting two, then appears to turn off, and then all LED's starting lighting up in a sequence from 1 to 4.
 3. Release the power button once the LED's start lighting up in a sequence from 1 to 4.
 4. The Hotronic App searches and displays your Hotronic Battery Pack in pairing mode. Connect each Hotronic Battery Pack individually in the app.
 5. Once pairing has been successful, a green LED on the Battery Pack will light up for five seconds.

USING HEAT SETTINGS

6. Use Foot Warmer to maintain comfort and warmth. (Note: Prevent feet from getting cold. Warming cold feet requires more energy, is less effective, and is not intended use of Foot Warmer.)
7. Before going into cold, set at 1, 2, or 3 to maintain comfort and warmth.
8. For additional burst of heat, set to "timed setting 4". "Timed setting 4" auto-resets to setting 3 after 3 minutes.
9. DO NOT USE "TIMED SETTING 4" for more than three minutes at a time as it may become too hot and may result in burns. SEE CAUTIONS REGARDING BURNS.
10. Heat does not thermostatically cycle on and off. Settings 1 and 2 maintain warmth AND save energy.

WHAT TO EXPECT OF HEAT SETTINGS

1. Expect imperceptible heat to maintain comfort and warmth.
2. Do not expect "fireplace toes".
3. Learn what personally works best over time.
4. Think of your Foot Warmer as Thermo Active Insulation (TM). As cold penetrates through insole, it draws heat off Element rather than toes. Balanced heat is imperceptible yet maintains comfort and warmth. Too much heat and feet feel excess heat. Too little heat and feet feel cold penetrating through.
5. If feet are comfortable yet feel excess heat, turn to lower setting to minimize perspiration and maximize battery duration.
6. If feet begin to feel cool, turn setting up to maintain comfort and warmth.
7. If you think Foot Warmer is not working, try turning left Battery Pack off. If left foot becomes colder, Foot Warmer is working.
8. Ability to feel heat and maintain comfort and warmth depends upon: proper installation; type, fit, and dryness of footwear, sock, and insole; foot callus size; activity levels; weather conditions; and other factors.
9. Expect bottom of toes to feel heat less than fingers and hands.

COMFORT AND WARMTH RANGES

When first learning use of Foot Warmer, following chart may help in setting selection. Chart represents approximate ranges for comfort and warmth maintenance. First determine outside temperature then select setting based on personal sensitivity to cold. More sensitive select left of range. Less sensitive select right.

WELCOME TO HOTRONIC FOR 23/24!

| COMFORT AND WARMTH RANGES | | | | | | | | | | |
|---------------------------|---|-----|----|----|----|-----|-----|-----|-----|-----|
| OUTSIDE TEMPERATURES | | | | | | | | | | |
| ° | C | >0 | 0 | -4 | -7 | -10 | -12 | -15 | -18 | -21 |
| Setting | F | >32 | 32 | 25 | 20 | 15 | 10 | 5 | 0 | -5 |
| 1 | | • | • | • | • | • | | | | |
| 2 | | | • | • | • | • | • | • | | |
| 3 | | | | | • | • | • | • | • | • |

TIPS ON USING FOOT WARMER

- Extremely poor circulation or extremely cold conditions may require setting 2 or 3 for comfort and warmth. Extra Battery Packs extend all day comfort and warmth.
- Do not allow chair lift to hit you! Damage may result to you and your Foot Warmer.
- Be careful walking down stairs! Battery Packs may catch stair edge when mounted on back of boots.
- Place heated insole (fabric surface up) directly underneath socked foot. Do not place another insole over heated insole.
- Proper fitting boots help maintain comfort and warmth. Tight boots and improper fit restrict blood flow and compromise comfort and warmth.

DRY BOOTS! DRY SOCKS!

- If boots and socks are wet, expect cold feet.
- Wet conductive heat loss is 23 times greater than dry heat loss. (W. L. Gore & Associates, 1994)
- Feet perspire more than any other part of your body except your head and hands. Each foot perspires about 1/4 cup of water a day at rest and one full cup when active. (W. L. Gore & Associates, 1994)
- Maintain dry boots! Dry after each use! Each additional day of moisture buildup makes warm feet more difficult. Consider boot dryer (i.e. Hotronic's MicroDry or TechDry Dryers).
- Remove inner boots to dry between liner and boot shell.
- Maintain dry, clean socks! Change midday for afternoon comfort and warmth.
- Use single pair of medium weight socks. Select wool blend, polypropylene®, or thermax® type socks to wick moisture away and keep feet dry and warm.
- Do not use thick socks, neoprene socks, or reflective sock liners as these keep heat from toes.
- Do not use cotton or other moisture absorbing socks.

RECHARGING BATTERY PACKS

- CAUTION - WARRANTY:** Use Hotronic's Recharging Cable ONLY for XLP C Footwarmers. Using other than Hotronic's cable voids Warranty.
- CONDITIONING CHARGE:** When Battery Pack is new or has not been used for 2 months or more, it is recommended to charge Battery Pack for 24 to 72 hours uninterrupted. Conditioning Charge brings new, unused, or unconditioned Battery Pack to full duration and temperature potential.
- RECOMMENDED OVERNIGHT RECHARGING PROMPTLY AFTER EACH USE:** Hotronic's Recommended Process of Overnight Recharging Promptly After Each Use helps maintain properly conditioned Battery Pack throughout season and during long periods of non-use. To further optimize charge levels after a week or more of non-use, repeat Overnight Recharging Process the night before next use.
- FULLY CHARGED IN APPROXIMATELY 8 HOURS OR LESS:** Hotronic's Recharging Cable detects when one or more batteries within Battery Pack are fully charged and automatically switches to trickle current recharging (Recharger LED is green) after approximately 8 hours or less

of full current recharging. Fully charged, properly conditioned Battery Pack reaches full duration and temperature potential. Fully charged, unconditioned Battery Pack does NOT reach full duration and temperature potential. (See Conditioning Charge.)

- SUMMER AND LONG TERM STORAGE:** Use either 'Storage Mode' option in the Hotronic Heat App or recharge Battery to between 25-50% charge, turn Battery Pack off, and store without Recharger or Heating Element plugged in. **RECOMMENDED BEST STORAGE TEMPERATURES** range from 5°-25°C (40°-80°F).
- ELECTRIC INPUT:** The USB Recharging Cable is compatible with any USB A power supply that provides 3.0 amperes of output at 5 volts, 2.0 amperes of output at 9 volts, or 1.5 amperes of output at 12.0 volts.
- OCCASIONAL FULL DISCHARGE:** While not required of NiMH batteries, Hotronic recommends an occasional full discharge before fully recharging to help maintain optimal strength. Plug Heating Element into Battery Pack and use "continuous setting 4" for quickest discharge. Battery Pack is fully discharged when Heating Element is no longer warm and all LEDs are off.

RECHARGE WHEN BATTERY PACK IS OFF: Hotronic recommends recharging when Battery Pack is off. (Battery Pack is off when all LEDs are off.)

- Plug Recharging Cable into appropriate USB A adapter (see Electrical Input specifications above).
- Attach each Battery Pack to Recharger.
- Battery Pack LED's are all flashing red when detecting Battery Pack status (~7 seconds) and will blink in sequence indicating charging status
 - If Battery Pack status is not okay or is not compatible, Recharger will blink red within 20 minutes of continuous red.
 - Maximum duration for continuous red is approximately 8 hours at which time fourth LED becomes green.
- Fourth LED is green once Battery Pack is fully charged and indicates trickle current recharging.
- One Battery Pack may reach full charge before other.
- Battery Pack may be removed at any time during recharging process and may be re-attached to Recharger at any time.
- Once Recharging Process is complete:
 - Unplug Battery Pack from Recharging Cable.
 - Unplug Recharging Cable from USB A adapter.
- To maintain maximum charge after recharging, turn Battery Pack off and store without Recharging Cable or Heating Element plugged in.

Charge Status As Indicated By LED Lights

| | |
|-------------------|--|
| 0 – 25 % charged | 1 st LED slowly flashes red |
| 25 – 50 % charged | 1 st LED lights up red, 2 nd LED flashes red |
| 50 – 75 % charged | 1 st & 2 nd LEDs light up red, 3 rd LED flashes red |
| 75 – 99 % charged | 1 st , 2 nd & 3 rd LEDs light up red, 4 th LED flashes red |
| 100 % charged | 4 th LED lights up green |

WHAT TO EXPECT OF BATTERY PACKS

- Expect all battery types to lose strength over time.
- Expect optimal performance of newer Battery Packs.
- Expect optimal performance with use shortly after recharging.
- Expect less than optimal performance after recharging as each week or month passes before use.
- Battery self-discharge rates may range from 2 to 5 percent per month when stored at ambient temperature of ~20°C (~68°F).
- When Battery Packs are unplugged and left on settings 1, 2, 3, or 4, a significant increase in discharge results.
- When unplugging Recharging Cable from adapter, also unplug Battery Packs from Recharging Cable. When not unplugged, damage may occur to Recharging Cable and a significant increase in Battery Pack discharge may occur regardless of setting.

TIPS ON RECHARGING

- When fourth Battery Pack green LED is on (trickle current recharging), Battery Pack may remain on Recharger indefinitely.

WELCOME TO HOTRONIC FOR 23/24!

2. However, as further protection against possible battery damage from power outage, surge, or brownout, Hotronic DOES NOT recommend leaving Battery Pack connected to Recharging for extended periods of time such as 24 hours or more.
3. To confirm wall outlet is NOT controlled by switch, plug in adapter, Recharging Cable, attach Battery Pack, and confirm red LED status.
4. One or two Battery Packs may be recharged on one Recharging Cable per above instructions.
5. Hotel room razor outlets (and other Ground Fault Current Interrupter outlets) are not recommended.

TIPS ON SUMMER & LONG TERM STORAGE

1. For summer and long term storage, either follow the instructions for 'Storage Mode' in the Hotronic Heat App (for Bluetooth Battery Packs) or recharge Battery Pack to between 25-50%, turn Battery Pack off, and store without Recharging Cable or Heating Element plugged in.
2. For all Hotronic XLP Battery Packs, no conditioning charge is required.
3. Do not store (or keep overnight) Battery Pack at temperatures above 105°F (40°C) as this will harm batteries.
4. Do not store (or keep overnight) Battery Pack at temperatures at or below freezing (32°F) (0°C) as it may harm batteries.
5. Do not store (or keep overnight) Recharging Cable at temperatures below -4°F (-20°C) or above 149°F (65°C) as this may harm Cable.

OTHER MISCELLANEOUS TIPS

1. All Hotronic Foot Warmers within a given model essentially have same total energy output. Tolerances in micro-controllers, micro-processors, micro-chips, and batteries result in any setting being slightly warmer while not lasting as long and vice versa.
2. Battery Packs are water resistant. Should water get inside, hold, shake, and place upside down until dry. See CAUTIONS REGARDING BURNS.
3. Heating Elements and Insoles are water resistant. If wet, drying completely prolongs life.
4. Replacement parts and accessories are available at your Hotronic Dealer.
5. Sending in Warranty Card helps insure proper coverage.

CAUTION: USE HOTRONIC BRAND COMPONENTS ONLY

- DO NOT USE any non-Hotronic branded, look-alike components with the Hotronic Foot Warmer as it MAY BE UNSAFE and MAY RESULT IN BURNS.
- Connecting any Hotronic Battery Pack or Heating Element with a non-Hotronic battery pack or heating element MAY RESULT IN BURNS at any setting including "0" (off).
- Connecting any Hotronic Battery Pack or Recharging Cable with a non-Hotronic battery pack or recharger MAY BE UNSAFE.
- Contact Hotronic directly if you have any questions regarding this.

CAUTIONS REGARDING RECHARGING

- Recharging Cable is FOR INDOOR USE ONLY.
- Recharging Cable is INTENDED FOR CORRECT ORIENTATION AND CONNECTION to USB A adapter at all times.
- Recharging is intended FOR USE ONLY WITH Hotronic's rechargeable Lithium-Ion (Li-Ion) XLP C Battery Packs as specified in Operating Instructions.
- DO NOT ATTEMPT TO RECHARGE other types of rechargeable or non-rechargeable batteries with this Recharging Cable (other than Li-Ion as specified in Operating Instructions) as this may cause personal injury and damage to Recharging Cable.
- KEEP DRY. TO PREVENT FIRE OR ELECTRICAL SHOCK, do not expose this unit to rain or moisture.
- DO NOT OPERATE THIS RECHARGER with damaged plug.
- DO NOT REPAIR OR ATTEMPT TO REPAIR Recharger, Battery Pack, or any other Hotronic branded electrical unit, component part, or accessory in any situation.
- NOT INTENDED FOR USE by young children or infirm persons without supervision.

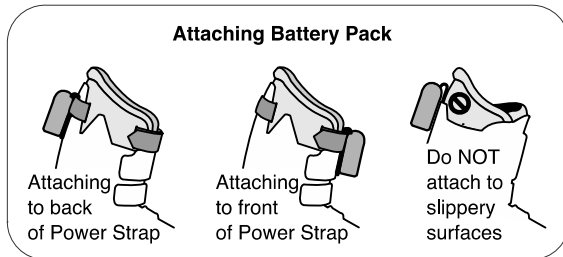
- SUPERVISE YOUNG CHILDREN to ensure they do not play with Recharger and/or any component part or accessory of Foot Warmer.
- WHEN THERE IS AN EMERGENCY CASE, immediately unplug all Battery Packs from Recharger and unplug Recharger from power outlet. Contact Hotronic distributor or dealer.
- SOME EMERGENCY CASES are smoke coming from Recharger, shape change, liquid or material leakage, and unit dropped and broken. Other emergency cases may exist.

CAUTIONS

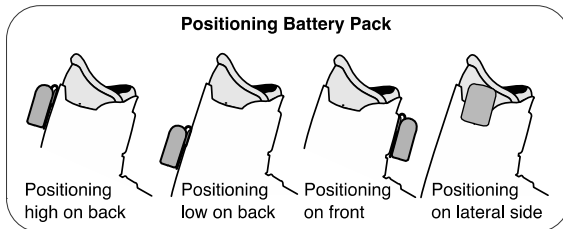
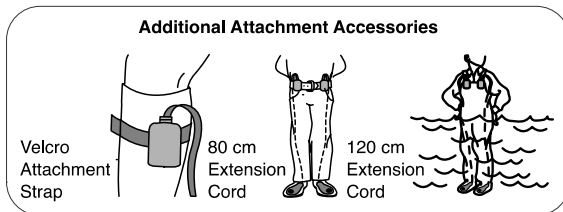
- ATTACH BATTERY PACK SECURELY at all times as loss of Battery Pack is NOT covered under Manufacturer's Limited Warranty.
- SETTING 4 HAS INCREASED IN TEMPERATURE (as of 7/95) and MAY RESULT IN BURNS.
- USE OF FOOT WARMER DOES NOT ASSURE that freezing or frostbite of foot will not occur. As always, use caution and good judgment when you are in cold temperatures.
- DO NOT CAUSE ELECTRICAL LEADS in plug area of Battery Pack to touch as there is DANGER OF A SHORT CIRCUIT.
- DO NOT USE FOOT WARMER IF ANY BATTERY PACK ELECTRICAL LEADS ARE BENT such that any two leads may contact upon further use. Such contact may cause an increase in temperature output of Heating Element and MAY RESULT IN BURNS or such contact may result in a SHORT CIRCUIT.
- DO NOT DAMAGE Battery Pack by use of undue external force.
- DO NOT DISPOSE of Battery Pack by throwing in a fire as there is DANGER OF EXPLOSION.
- DO NOT PUT ANY METAL OBJECTS into plug area of Battery Pack as there is DANGER OF A SHORT CIRCUIT.
- DO NOT CAUSE UNDUE OR EXCESSIVE WEAR, TEAR, OR ABRASION to Power Cord as there is DANGER OF A SHORT CIRCUIT.
- INSPECT ALL RECHARGER AND HEATING ELEMENT POWER CORDS for exposed wires prior to plugging into Battery Packs or electrical outlet as exposed wires may result in a SHORT CIRCUIT.
- DO NOT WRAP RECHARGER OR HEATING ELEMENT POWER CORDS AROUND BATTERY PACKS while plugged into Battery Packs as this may result in a SHORT CIRCUIT.
- DO NOT PLUG RECHARGER PLUG INTO BATTERY PACK BACKWARDS as there is DANGER OF A SHORT CIRCUIT.
- DO NOT CUT Power Cord or Heating Element.
- DO NOT KINK Power Cord or Heating Element.
- BATTERY PACK MAY CONTAIN HAZARDOUS MATERIALS and may require specific disposal. Contact Hotronic distributor or dealer or local recycling agency for proper disposal method.

ATTACHING BATTERY PACKS

- Slide Battery Pack Wire Clip SECURELY over boot top (see point 2 below), boot or shoe laces, or attach to strap such as Velcro® power strap on ski or snowboard boot.



- NOTE: DO NOT SLIDE BATTERY PACK OVER SLIPPERY MATERIAL SUCH AS SKI BOOT PLASTIC AS THE EASIER IT SLIDES ON, THE EASIER IT WILL SLIDE OFF. SECURELY ATTACH BATTERY PACK AT ALL TIMES.
- Mounting Bracket Accessory (optional). For simple, secure, quick attachment of Battery Packs to ski or hard shell snowboard boots.
- Strap Bracket Accessory (optional). For simple, secure, quick attachment of Battery Packs to ski or snowboard boot power straps.
- Slide Strap Bracket Accessory (optional). For Battery Pack Power Plus S4+, S3, e4, e3, m4, and m3 only. Provides simple, secure, quick attachment of Battery Packs to ski or snowboard boot power straps.
- Velcro® Attachment Strap Accessory (optional). Strap around leg at or above calf or around boot top. Battery Pack clips over Strap.
- Extension Cord Accessory (optional). Run Cord underneath pant leg and plug into Battery Pack at waist height (80 cm Cord) or chest height (120 cm Cord).



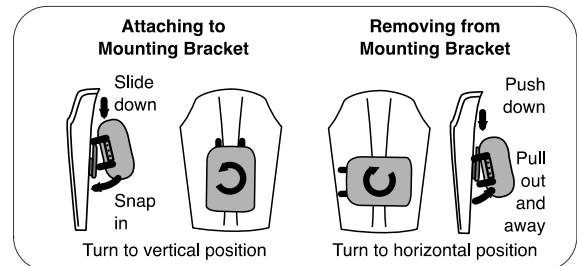
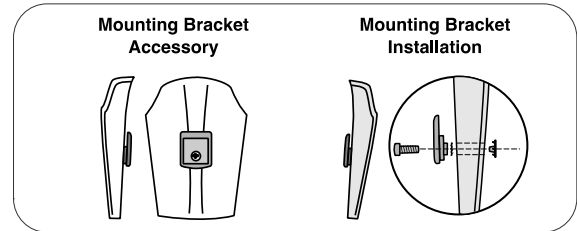
POSITIONING BATTERY PACKS (SKI & SNOWBOARD BOOTS)

- Positioning Battery Pack HIGH on back of boot permits pant leg to cover Battery Pack but increases potential chair lift damage.
- Positioning Battery Pack LOW on back of boot reduces potential chair lift damage but increases potential damage while walking down stairs.
- Positioning Battery Pack on TOP FRONT of boot permits pant leg to cover Battery Pack, eliminates potential chair lift and stair damage, and is convenient when adjusting setting.
- Positioning Battery Pack on TOP LATERAL SIDE of boot (see Strap Bracket and Slide Strap Bracket drawings) permits pant leg to cover Battery Pack, eliminates potential chair lift and stair damage, and is convenient when adjusting setting.

USING MOUNTING BRACKET

Mounting Bracket Installation

- Determine best location on front or back of boot.
- Note any internal molded ribs or mechanisms.
- Drill a 5/16 inch (8mm) hole.
- Insert Bracket Stem with Serrated Washer and Bolt.
- Insert T-nut into Stem from inside boot.
- Tighten Bracket, Serrated Washer, and T-nut until flush and secure against boot material such that it is difficult to see Serrated Washer.
- If boot material is exceptionally hard, then heat with air gun until warm to touch to facilitate a flush fit against boot.



- Use proper length bolt. If otherwise, trim, snip, or cut bolt to proper length.
- If Bracket Stem is longer than hole depth, then gradually shorten Stem with razor knife for secure, flush fit against boot.

Attaching Battery Pack To Mounting Bracket

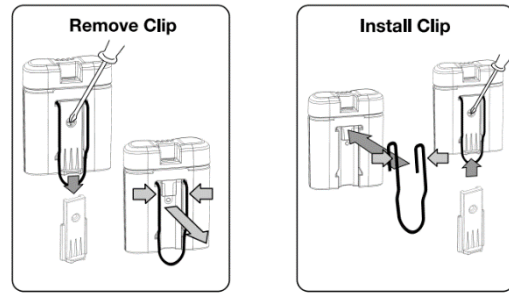
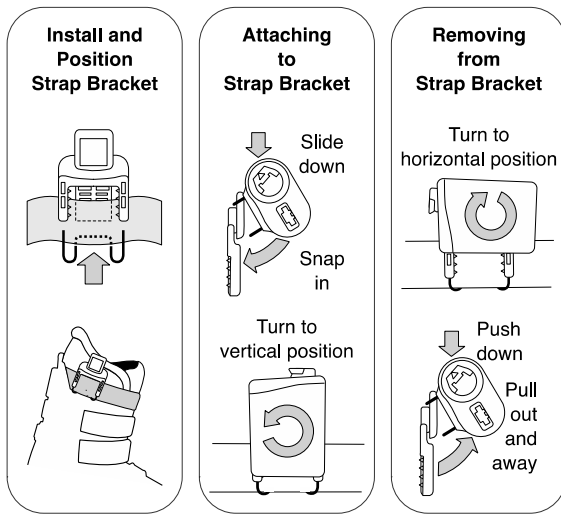
- Position Battery Pack horizontally so Battery Clip upper wire "belt loop" section slides over top edge of Bracket.
- Slide Battery Pack down on Bracket firmly until lower wire section of Battery Clip snaps over bottom edge of Bracket.
- Turn Battery Pack 90° into vertical position.
- Plug in Power Cord as final step.

USING STRAP BRACKET

Strap Bracket Installation

- Determine best location on Power Strap.
 - Too far forward obstructs closure of Power Strap.
 - Too far back conflicts with top back spoiler of boot.
- Insert wire form into ends of Strap Bracket with horizontal section on backside of Power Strap.
- To secure Strap Bracket on Power Strap, push horizontal section of wire form over and up center section of Strap Bracket until Power Strap is tightly clasped between Strap Bracket and wire form.

WELCOME TO HOTRONIC FOR 23/24!



Attaching Battery Pack to Strap Bracket

1. Position Battery Pack horizontally so Battery Clip upper wire "belt loop" section slides over top edge of Bracket.
2. Slide Battery Pack down on Bracket firmly until lower wire section of Battery Clip snaps over bottom edge of Bracket.
3. Turn Battery Pack 90° into vertical position.
4. Plug in Power Cord as final step.

Removing Battery Pack From Strap Bracket

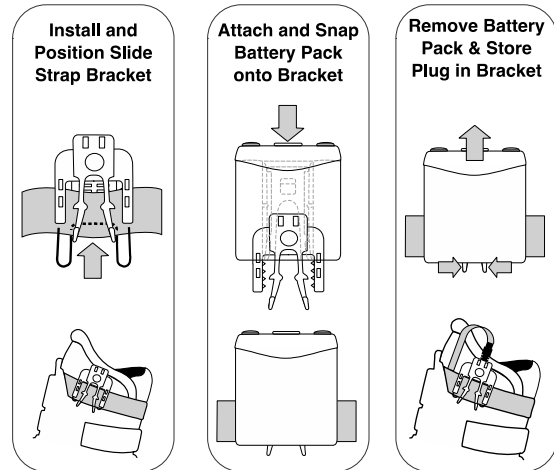
1. First unplug Power Cord.
2. Turn Battery Pack 90° into horizontal position.
3. Push down on Battery Pack and simultaneously pull lower wire "belt loop" section of Clip out and away from boot until it releases from lower edge of Bracket.
4. Slide Battery Pack up and off Bracket.

Attaching Battery Pack to Slide Strap Bracket

1. Position Battery Pack Wire Clip Channel over top of Slide Strap Bracket.
2. Slide Battery Pack down over Slide Strap Bracket until it snaps onto Bracket.

Removing Battery Pack From Slide Strap Bracket

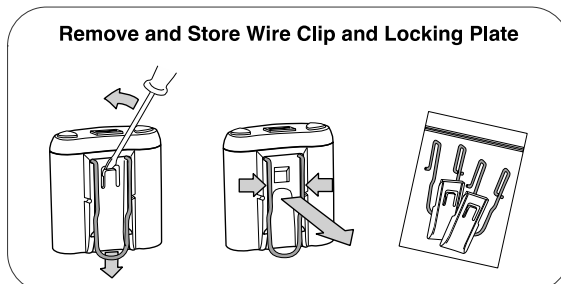
1. Press Slide Strap Bracket flexible legs together at bottom of Battery Pack.
2. Lift Battery Pack up and off of Slide Strap Bracket.
3. Re-install Wire Clip and Locking Plate when needed.



USING SLIDE STRAP BRACKET

Slide Strap Bracket Installation

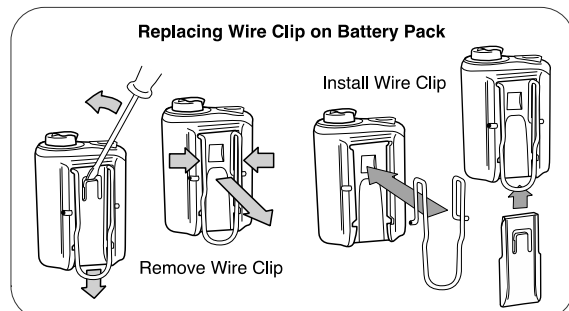
1. Remove and store Wire Clip and Locking Plate.
2. Determine best location on Power Strap.
 - Too far forward obstructs closure of Power Strap.
 - Too far back conflicts with top back spoiler of boot.
3. Insert wire form into ends of Slide Strap Bracket with horizontal section on backside of Power Strap.
4. To secure Slide Strap Bracket on Power Strap, push horizontal section of wire form over and up center section of Slide Strap Bracket until Power Strap is tightly clasped between Slide Strap Bracket and wire form.



USING BATTERY PACK WIRE CLIP KIT

Replacing Wire Clip on Battery Pack Power Plus

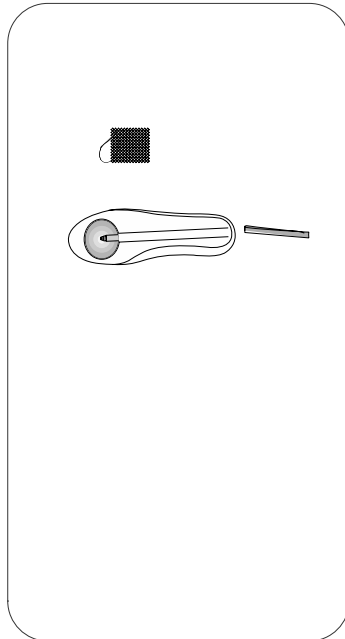
1. Remove Wire Clip and Locking Plate
 - Use narrow screwdriver to release locking pin on Locking Plate.
 - Slide Locking Plate off Battery Pack.
 - Push two sides of Clip together to release from Battery Pack.
 - Remove Wire Clip.
2. Install Wire Clip and Locking Plate
 - Push two sides of Wire Clip together when installing onto Battery Pack.
 - With Wire Clip properly installed, slide Locking Plate onto Battery Pack until securely locked in place.



INSTALLING HEATING ELEMENTS IN HOTRONIC HEAT READY INSOLES

(Models are One Size Fits All Insoles & Semi Custom Insoles)

1. Open Heating Element door found on bottom of Insole.
2. Remove adhesive separating layer.
3. Insert Heating Element with Power Cord facing up and aligned with channel.
4. Remove adhesive cover layer on Heating Element.
5. Close door pressing firmly on each side of Insole to set adhesive.
6. Apply self-adhesive fabric cover strip over Heating Element door and Power Cord channel.
7. Trim Insole to size.
 - 7a. One Size Fits All - Heat Ready Insole.
 - 7b. Semi Custom - Heat Ready Insole.



CAUTION:

1. DO NOT CUT Power Cord.
2. DO NOT CUT Heating Element located inside Heating Element door.
3. Place red fabric, heated side of Insole up when installing in footwear.

If using Hotronic's ONE SIZE FITS ALL INSOLES in footwear with removable insoles:

1. Align tips of both insoles.
2. Trace removable insole on backside of Hotronic Insole around sides and heel.
3. Trim Hotronic Insole to size of removable insole.
4. Hotronic Insole may be placed on top of removable insole or in place of.

If using Hotronic's ONE SIZE FITS ALL INSOLES in footwear without removable insoles:

1. Trace outline of foot on backside of Insole with TOES aligned over top of Heating Element.
2. Cut Insole along sides and heel.
3. Select slightly larger sizing line at first.
4. Further trim Insole where necessary.

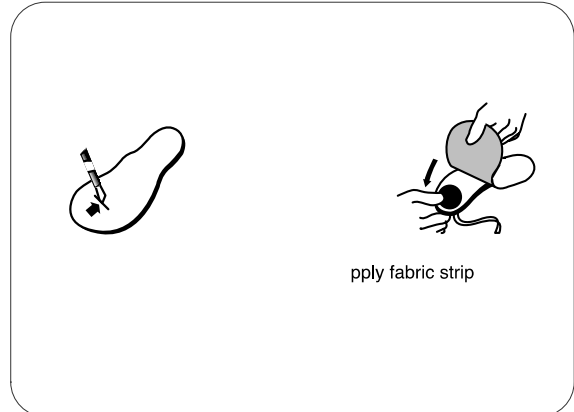
If using Hotronic's SEMI CUSTOM INSOLES:

1. First select best size SEMI CUSTOM Insole and install Heating Element.
2. Place Insole inside footwear.
3. If Insole fits well inside footwear, no further trimming is necessary.
4. If Insole needs trimming, use trim-to-size lines on bottom side of Insole toe area.
5. Trim Insole as needed.

INSTALLING HEATING ELEMENTS ON CUSTOM INSOLES

1. With foot on custom insole, position Heating Element under toes placing Power Cord toward heel.
2. Remove foot, carefully lift Heating Element slightly, and mark position on insole where Power Cord descends from Element.
3. Use razor knife or grinding device to make slit or narrow opening at marked position. Hard insole material may require wider opening for Plug. Use heat gun to soften hard material for narrowest opening.

Positioning Heating Element



4. Run Power Cord through slit or opening until Element lies flat and in correct position.
5. Remove adhesive cover layer on bottom of Element and adhere Element in correct position. If Element is without self-adhesive layer, use spray or brush-on adhesive between insole and Element.
6. Apply self-adhesive fabric cover over top of insole. Trim excess with scissors AFTER applying. If needed, use additional adhesive between insole and fabric.
7. Apply self-adhesive fabric strip over Power Cord on bottom of insole to hold in place.
8. If foot is sensitive to Power Cord, create shallow channel where needed under insole using razor knife or grinding device. Reapply fabric strip.

INSTALLING INSOLES IN GENERAL FOOTWEAR

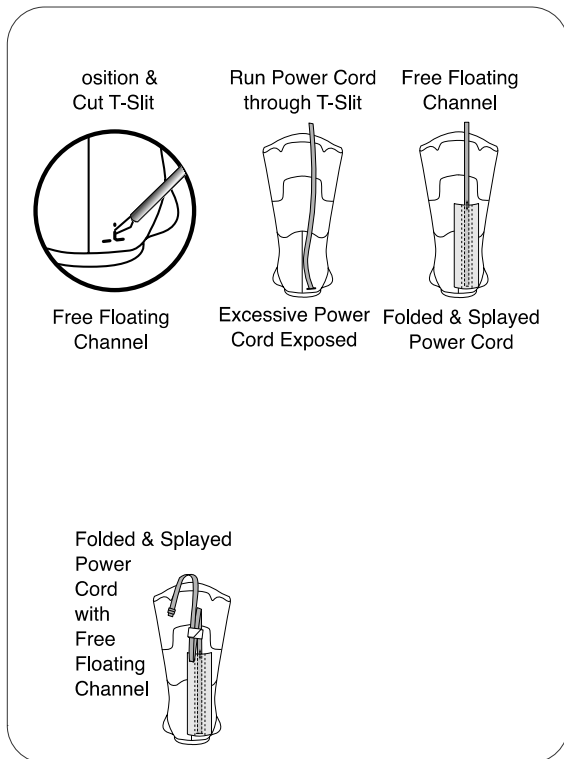
1. Place insole in footwear with Power Cord flat underneath.
2. Run Power Cord up back or side of leg.
3. Securely fasten Battery Pack as per instructions.
4. Plug Power Cord into Battery Pack.

INSTALLING INSOLES IN BOOTS WITH REMOVABLE LINERS (Ski & Snowboard Boots...)

1. Pay complete attention during installation to prevent chafing, abrading, cutting, over tension, and tearing of Power Cord. These types of damages are NOT covered under Manufacturer's Limited Warranty.
2. To place Power Cord between inner boot (removable liner) and shell, Hotronic recommends following:
 - Remove inner boot from shell and existing insole from inner boot.
 - With insole removed, use fingertips along bottom inside and outside edges of inner boot heel pocket to locate position where Power Cord will exit.
 - Mark 3/4 inch (2cm) horizontal line on inner boot exterior at position for cut. DO NOT POSITION CUT over inner boot seam.
 - With razor knife, cut cleanly through inner boot along 3/4 inch (2cm) line. Then cut 3/8 inch (1cm) up from center of line to create T-slit.
 - Insert insole partially into inner boot, align Power Cord, and push Plug through T-slit.
 - Verify Power Cord is laying flat in inner boot, then fully insert insole.

WELCOME TO HOTRONIC FOR 23/24!

3. Taping Power Cord to inner boot may protect it from undue wear and tear. However, reduce possible over tension and severing of Cord in forward flexing with “free floating channel” in tape. Adhere half-width strip of duct tape lengthwise up center of full width piece with sticky sides together. With full width adhered to inner boot, half-width strip serves as “free floating channel”.
4. Reduce excess length of Power Cord by gently folding into ribbon, splaying to reduce thickness, and taping in center. Place between inner boot and shell. **DO NOT BEND REPEATEDLY** in previously folded area as it may cause Cord to fail.
5. Leave adequate length of Power Cord looped up and outside boot. This reduces chances of tearing and damaging Power Cord. Too short becomes inconvenient. Too long exposes unnecessary lengths to damage from zippers, chair lifts, metal edges (when stepping out of bindings), and other objects.



TIPS ON INSTALLATION

1. For specific footwear or activities, contact your Hotronic Dealer regarding installation recommendations.
2. For longer reach of Power Cord, bring out from under insole in front of outside anklebone then up along side of leg. (For Equestrian Dressage or Field boots.)
3. Reduce excess length of Power Cord for liner-less footwear by gently folding into ribbon and taping in center. Position folds closely outside top of footwear. **DO NOT BEND REPEATEDLY** in previously folded area as it may cause Cord to fail.